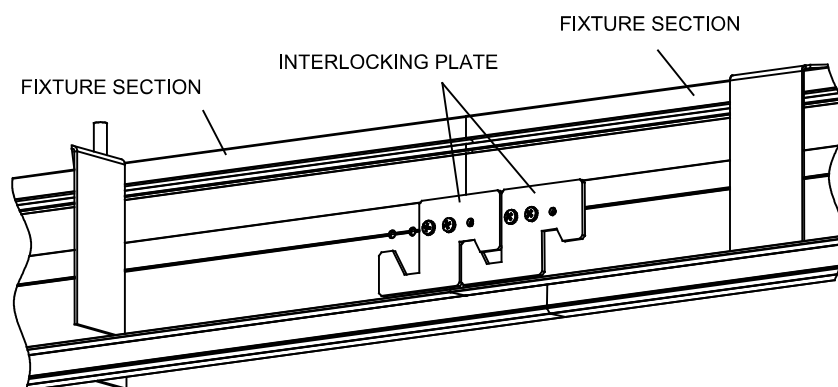
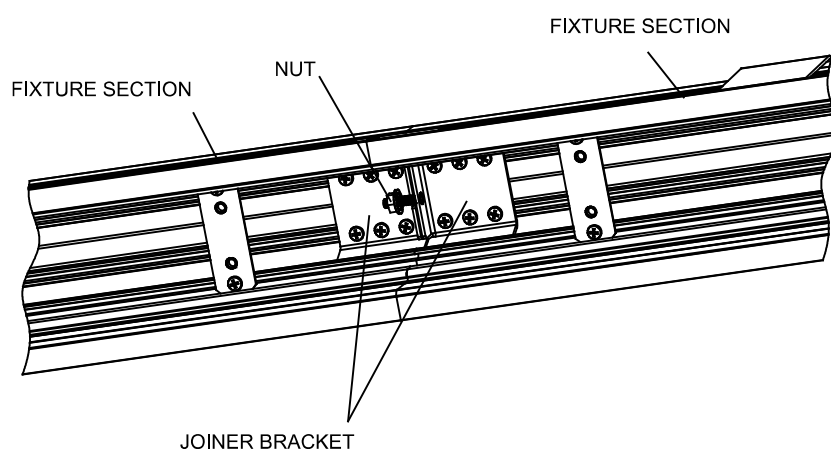


- 1: These instructions may not cover all details or variations. For additional information contact Beta-calco.
- 2: Luminaires must be installed in accordance with national electrical code and local regulation.
- 3: Disconnect the power before installing the fixture or servicing.
- 4: Min 90°C supply conductors.



11. Join both sections together using interlocking plates on both sides of each section and fastening the nut on the joiner bracket.



12. Repeat step 5 for the second section.
13. Reinstall reflectors with LED boards (see step 3).
14. Reinstall diffusers and louvres (see step 2).
15. When all sections of the fixture secure to the ceiling, the power can safely be turned on.